

# Athena Access

Branch Office Multi-protocol Access Concentrator



**Multiplexes LAN, legacy and voice/fax traffic streams**

**Frame Relay Access and Switching**

**X.25 Access and Switching**

**IP and IPX routing**

**Single port Ethernet 10BT or 8-port Hub**

**STAC Data Compression included**

**Private voice Networking**

**ISDN, E&M, FXS, and FXO interface**

**Widest selection of voice compression algorithms**

**ISDN BRI with U and S/T interface**

**56/64 Kbps DSU/CSU**

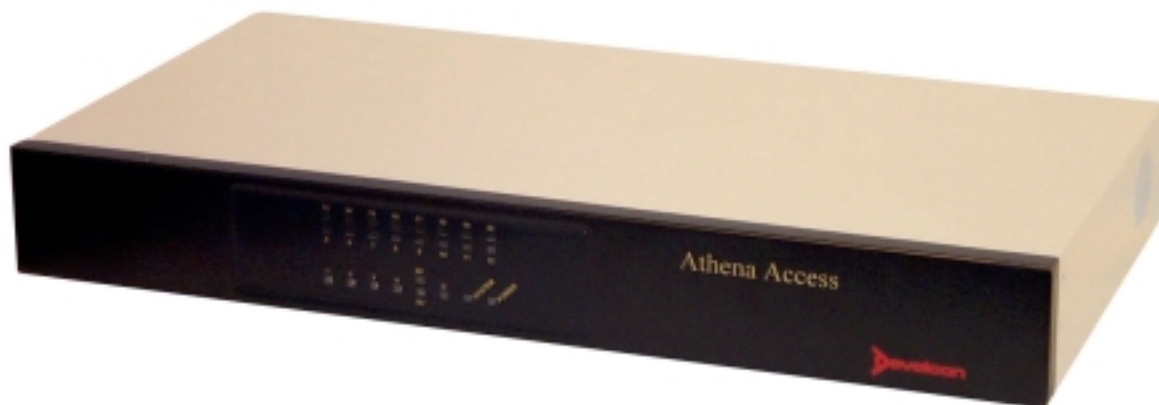
**Console, Telnet, and SNMP manageable**

**ATHENA ACCESS** is the right fit for your small office or branch office needs. As a multi-protocol concentrator, it combines LAN, legacy data, and voice networking in a single, high density unit. Whether your business is manufacturing, finance, government, or other commercial enterprise, **ATHENA ACCESS** delivers solutions that shrink operating costs while expanding your horizons.

**ATHENA ACCESS** offers integration that's saves you money by saving space, eliminating multiple units, and using a single power connection. Integral ISDN, G.703, CSU/DSU, 8-port Ethernet Hub, and analog voice ports eliminate external terminal adapters and termination units, data sets, Ethernet hubs, and voice multiplexers, eliminating up to 5 extraneous pieces of equipment. That not only reduces capital and installation costs, but on-going maintenance and support costs, as well.

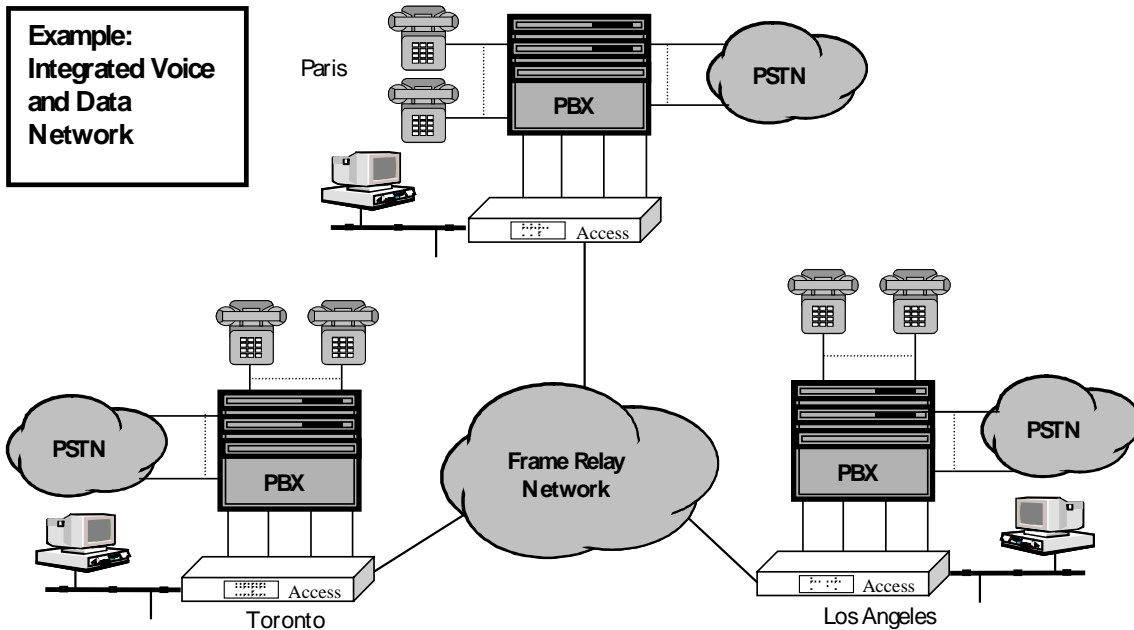
Simply stated, **ATHENA ACCESS** provides the best possible voice quality, because it has the best algorithms and lowest delay in the industry. With it's additional highly advanced voice optimization features, **ATHENA ACCESS** delivers toll quality voice service over low cost frame relay lines or the Internet. Now you can roll integrated voice services that rival telco offerings and reap the savings from long distance costs.

The interface selections, and software support, present literally dozens of variations in configurations that conform to your needs and allow you to use the most effective communications offerings available. From frame relay, X.25, PPP, or ISDN, interfacing to wide area services or locally attached devices is simple and reliable. Every one of our serial ports can be optioned with any of our modular WAN interfaces and any protocol can be assigned to any port. Flexibility that spells successful network solutions for you.



**Consul<sup>in</sup>Tel**  
Consultores Integrales en Telecomunicaciones

c/ Molino de la Navata, 75 – La Navata / Galapagar – 28420 (Madrid)  
Tel: 91-8587509 – Fax: 91-8587631 – <http://www.consulintel.es> – email: [info@consulintel.es](mailto:info@consulintel.es)



### Top Quality Voice

The Develcon **ATHENA ACCESS** delivers outstanding quality using international standards based compression algorithms such as G.728 Low Delay CELP (LD-CELP), recognized by many users as the optimum solution of lowest bandwidth, least end-to-end delay, and the highest voice quality.

### Voice Compression Choices

And **ATHENA ACCESS** also offers the widest selection of voice compression algorithms in the industry. Choose from:

- ◆ CELP at 5.3, 8.0, and 9.6 Kbps
- ◆ E-CELP at 4.8, 7.47, and 9.6 Kbps
- ◆ ITU G.726 ADPCM at 32 Kbps
- ◆ ITU G.728 LD-CELP at 16 Kbps
- ◆ ITU G.729 CS-ACELP at 8 Kbps
- ◆ ATC from 7.4 to 32 Kbps

### Voice Features

Advanced voice optimization features offer:

- ◆ toll-quality voice services
- ◆ bandwidth savings
- ◆ automatic voice activation
- ◆ silence suppression
- ◆ adaptive jitter buffering
- ◆ lost packet error handling
- ◆ integral echo cancellation

### Analog Voice Interfaces

Choose the interface to connect your PBX, key system, or telephone set using ISDN, E&M (2 or 4 wire), FXS, or FXO interfaces.

### FAX Support

**ATHENA ACCESS** saves even more long distance costs by providing intelligent Group III FAX detection and transmission supporting speeds from 2.4 to 9.6 Kbps.

### ISDN Flexibility

ISDN presents great opportunities for very reliable communications and significant cost savings. The **ATHENA ACCESS** implements ISDN BRI wide area links using frame relay, X.25 or PPP protocols, that can be used for primary network links or for automatic backup links when the primary route fails.

### Standards Compliant Routing

**ATHENA ACCESS** is a full IP and IPX router supporting:  
 Frame Relay RFC-1490  
 X.25 RFC-1356  
 PPP, sync and async  
 RIP and RIP2, SAP

### Easy Interfaces (EZIFs)

**ATHENA ACCESS** incorporates Develcon's new EZIFs for serial interfaces that make changes easy and economical. The selection of EZIFs range from X21, V24/TIA-232, V.35, 56/64K DSU, and G.703 interfaces.

### Dynamic CIR

Maximum data throughput is guaranteed by dynamically altering the bandwidth allocation when voice calls are not present. As voice calls are established and voice packets are flowing, only the required amount of the CIR is re-allocated.

### Data Compression

Make the most of your bandwidth by compressing high volume LAN traffic on to the most cost-effective links using STAC data compression. Throughput is maximized while costs are minimized.

### More Information

Comprehensive information describing the **ATHENA ACCESS** hardware and software is available. Contact your local representative or Develcon Electronics Ltd. and ask for Document A21000 Athena Access Product Specification.