

APPLICATION NOTE

7508S Workgroup Switching

Networks today are expanding faster than ever. Just as the number of users is increasing, the amount of bandwidth that each user needs is growing as well.

In any case, the need for more bandwidth does not affect all users at once. Those users who are running applications that either create very large files or need steady streams of bandwidth without interruption will need their own dedicated Ethernets first. As those applications leave the "bleeding-edge" stage and enter into the mainstream, the number of users requiring dedicated Ethernets will grow.

In an environment of increasing bandwidth requirements, the challenge to a network manager is twofold:

<First>, to provide the dedicated bandwidth to users without having to change network topology or media and,

<Second>, to install a solution that will continue to provide dedicated bandwidth as the number of users expands.

Often mentioned solutions to these challenges are FDDI and ATM. But both of these technologies are expensive, would require

scrapping investments in existing technologies, and in the case of ATM, it remains in the development stage.

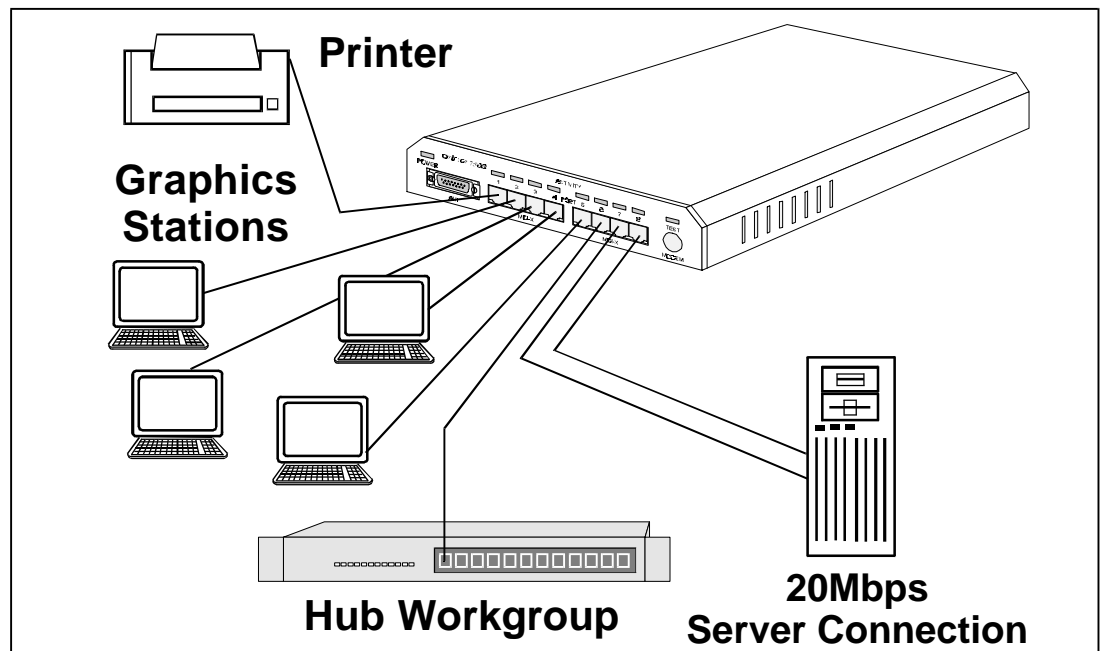
A better solution is to install the Orbitor 7508S Ethernet Switch. The Orbitor 7508S has eight full wire-speed Ethernet ports with which to connect workstations, servers and other high-use devices. Providing a dedicated 10Mbps 'pipe' to each device, even the most demanding of users who require a steady stream of uninterrupted Ethernet frames are guaranteed all of the bandwidth they need.

The Orbitor 7508S is a plug-and-play, cost effective device. It can be easily installed into a 10BaseT network without having to change cabling, NICs or any other existing part of the network, saving both time and money.

With features like 802.1D bridging, Spanning Tree Protocol and custom filtering, and 'Virtual LAN' support, the Orbitor 7508S offers all of the functionality you would expect from a more expensive solution, but without the cost.

Workgroup Switching Summary

- Orbitor 7508S provides full bandwidth to each port
- Allows workgroups to operate at their full potential
- Supports true 802.1D bridging and Spanning Tree with extensive filtering
- Provides Virtual LAN Support for up to four workgroups



03 May 1996